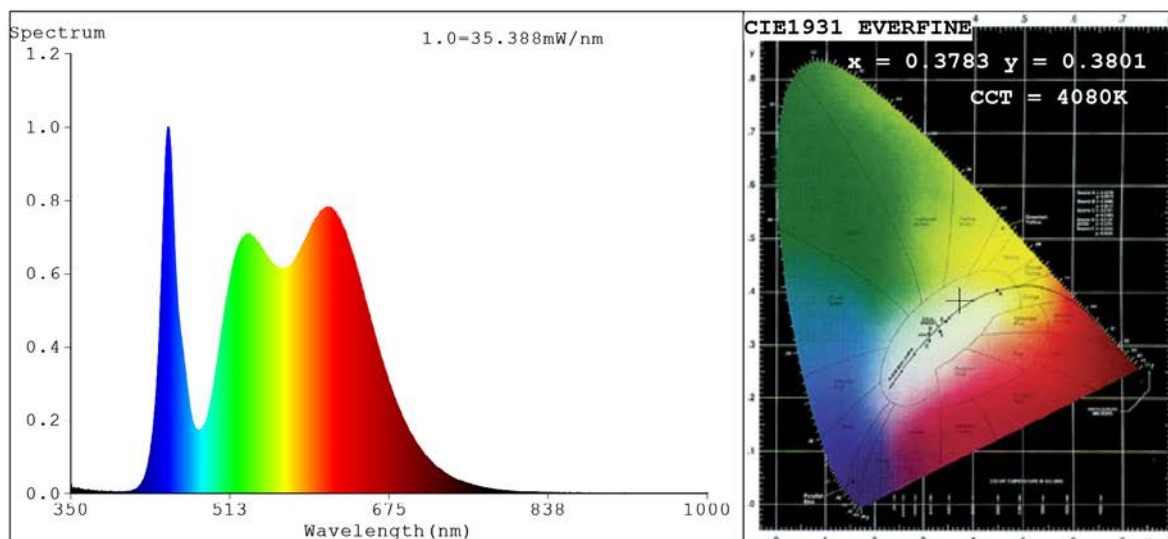


Spectrum Test Report



Color Parameters:

Chromaticity Coordinate: $x=0.3783$ $y=0.3801$ $u'=0.2224$ $v'=0.5027$
 CCT=4080K(Duv=0.0022) Dominant WL:Ld =577.6nm Purity=27.6%
 Ratio:R=19.8% G=77.1% B=3.2%;;Peak WL:Lp=449.5nm FWHM=18.5nm
 Render Index:Ra=91.1 CRI=86.4 TM30:Rf=89 Rg=101
 R1 =94 R2 =92 R3 =88 R4 =93 R5 =92 R6 =89 R7 =94
 R8 =87 R9 =60 R10=79 R11=91 R12=64 R13=94 R14=93 R15=90

Photo Parameters:

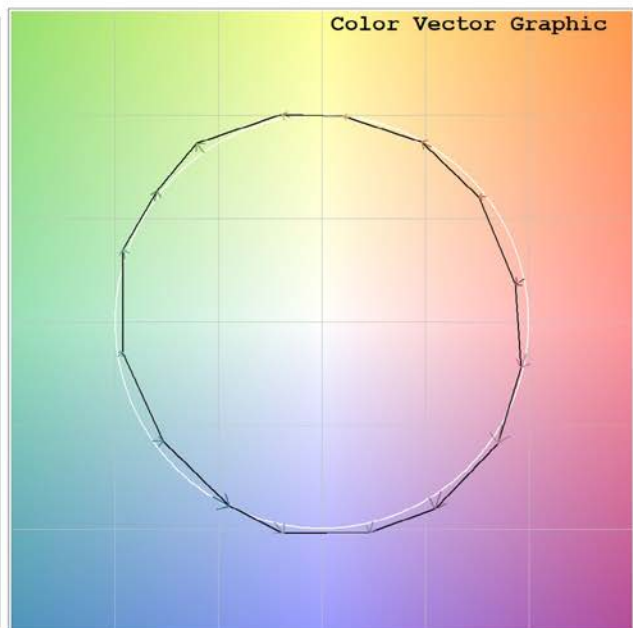
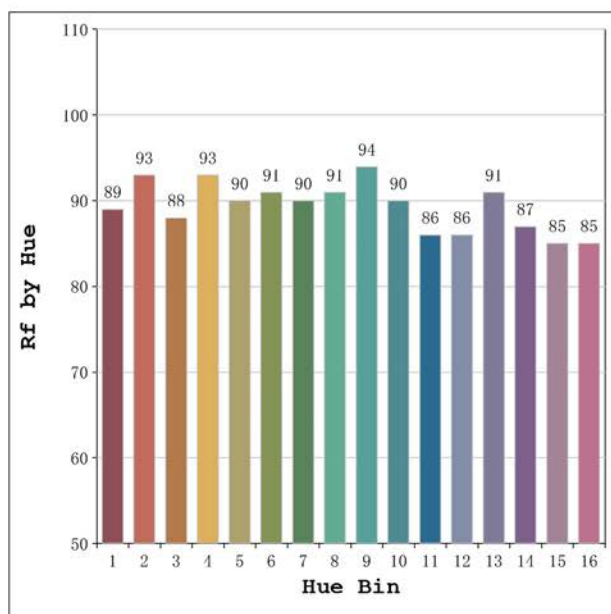
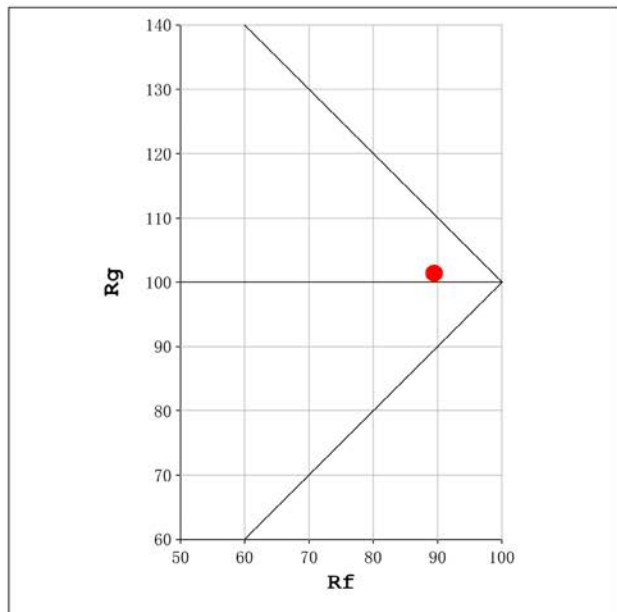
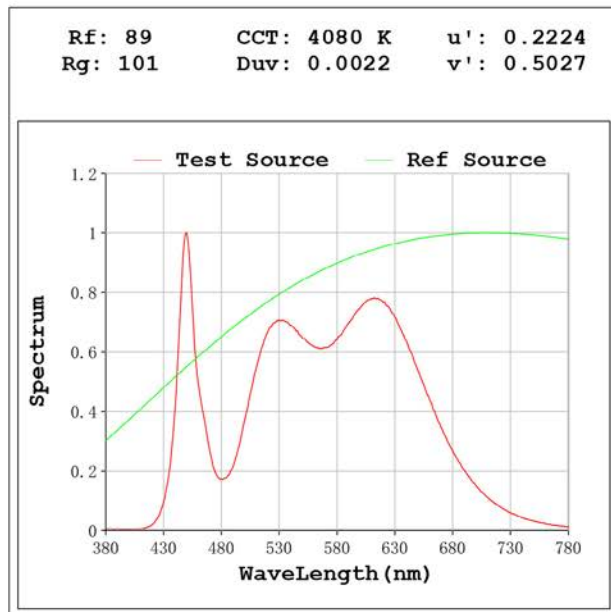
Flux = 1642 lm Eff. : 109.50 lm/W Fe = 5.279 W

Electrical parameters:

V = 23.998 V I = 0.6247 A P = 14.99 W PF = 1.000

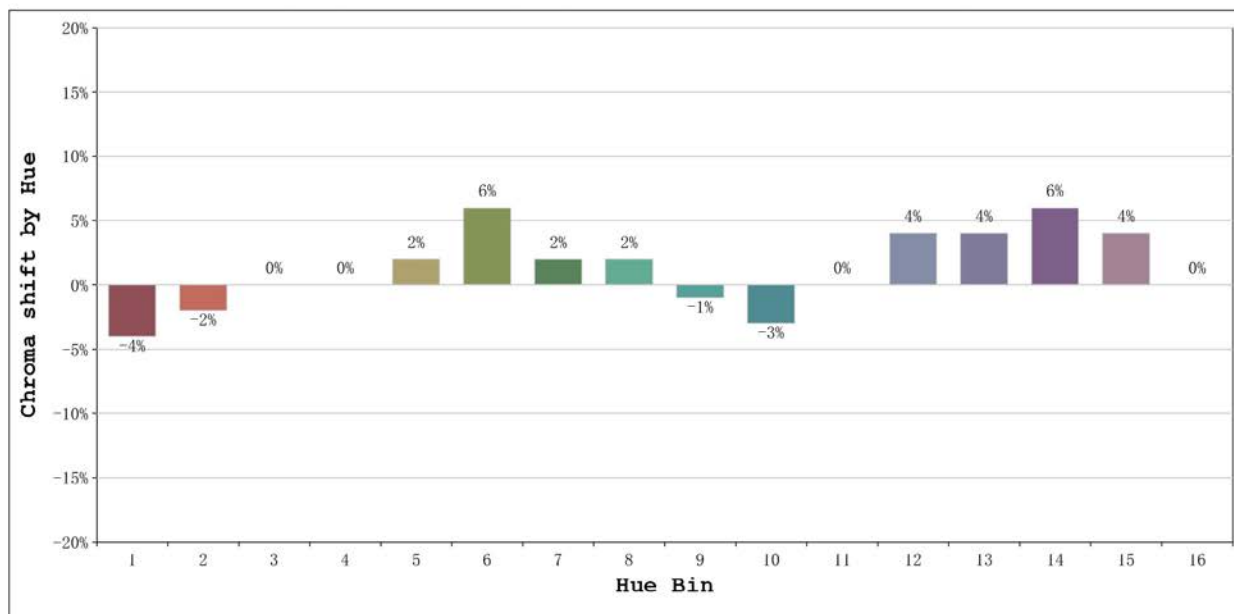
Status: Integral T = 831 ms Ip = 45012 (69%)

Model:Ecoled Élite 15 Gold 4000	Number: 31.174
Tester:Sergio Carneros	Date:2025-02-12 15:04:53
Temperature:20Deg	Humidity:50%
Manufacturer:Luz Negra	Remarks:100cm de tira flexible



Model:Ecoled Élite 15 Gold 4000
 Tester:Sergio Carneros
 Temperature:20Deg
 Manufacturer:Luz Negra

Number: 31.174
 Date:2025-02-12 15:04:53
 Humidity:50%
 Remarks:100cm de tira flexible



			Graphic shift(%)	
Hue Bin	Hue Angle	Rf	Chroma	Hue
1	0.0° - 22.5°	89	-4	-1
2	22.5° - 45.0°	93	-2	1
3	45.0° - 67.5°	88	0	5
4	67.5° - 90.0°	93	0	3
5	90.0° - 112.5°	90	2	4
6	112.5° - 135.0°	91	6	1
7	135.0° - 157.5°	90	2	-4
8	157.5° - 180.0°	91	2	-4
9	180.0° - 202.5°	94	-1	-1
10	202.5° - 225.0°	90	-3	3
11	225.0° - 247.5°	86	0	9
12	247.5° - 270.0°	86	4	5
13	270.0° - 292.5°	91	4	-1
14	292.5° - 315.0°	87	6	-6
15	315.0° - 337.5°	85	4	-8
16	337.5° - 360.0°	85	0	-6

Model:Ecoled Élite 15 Gold 4000 Number: 31.174
 Tester:Sergio Carneros Date:2025-02-12 15:04:53
 Temperature:20Deg Humidity:50%
 Manufacturer:Luz Negra Remarks:100cm de tira flexible